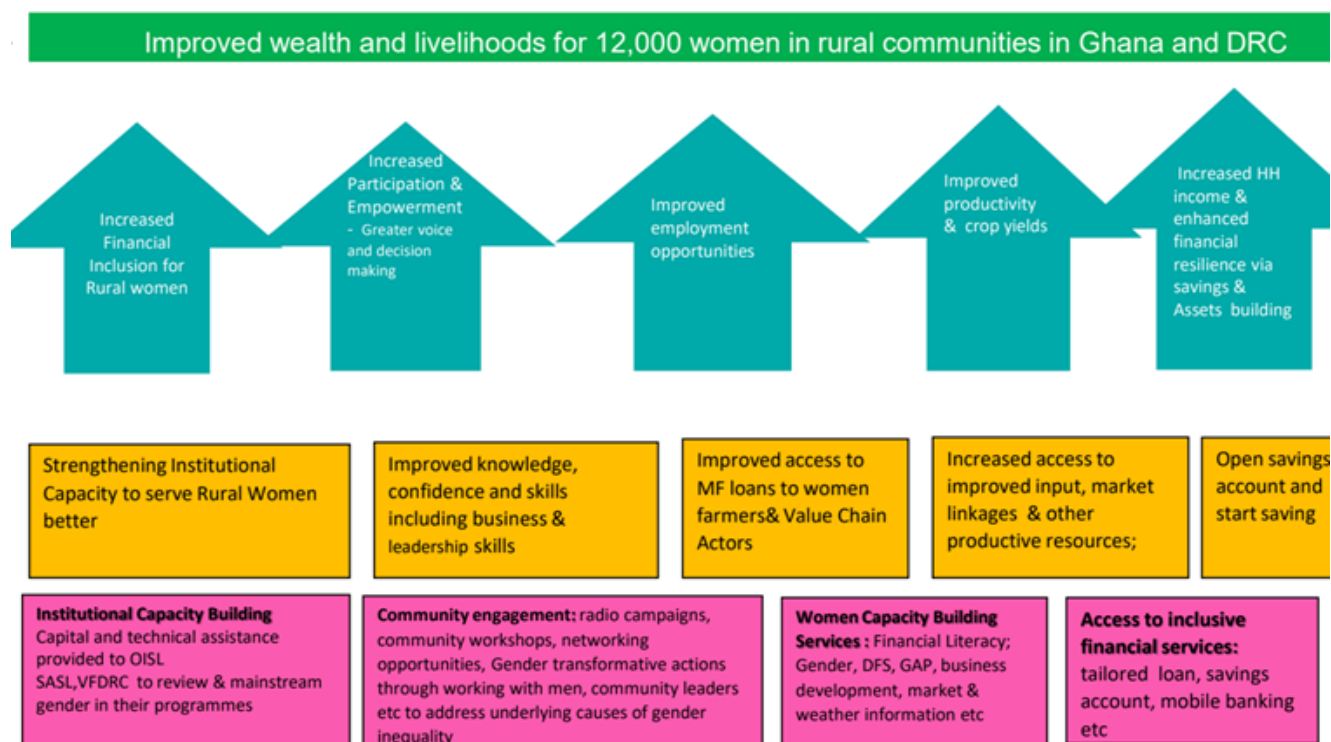
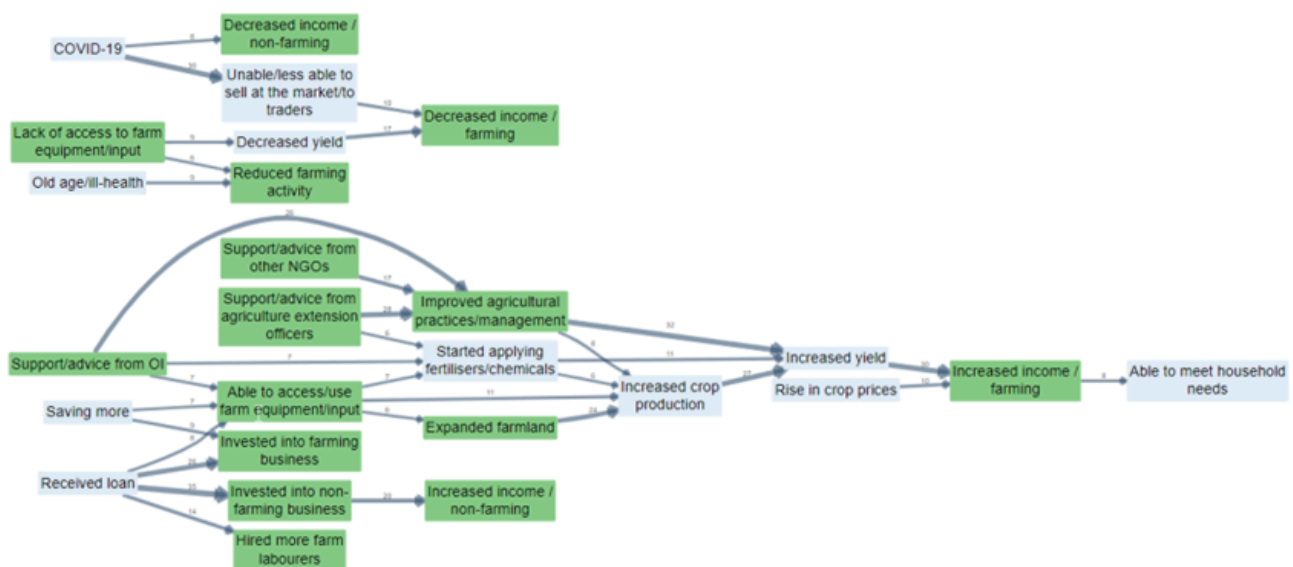




DOES THE EVIDENCE SUPPORT YOUR THEORY OF CHANGE?



One way to do this is to use the elements from your theory of change as your codebook and only add other elements when necessary. Validated pathways of change (by showing which mechanisms are observed on the ground) and find gaps where expected pathways might be missing or where stakeholders list elements were not anticipated in the theory of change?



We discuss this approach at more length in (Powell et al., 2023).

References

Powell, Larquemin, Copestake, Remnant, & Avard (2023). *Does Our Theory Match Your Theory? Theories of Change and Causal Maps in Ghana*. In *Strategic Thinking, Design and the Theory of Change. A Framework for Designing Impactful and Transformational Social Interventions*.